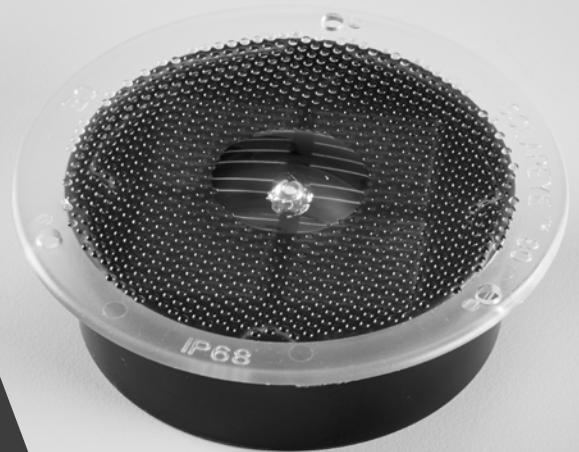


CASE STUDY

Safe, sustainable and simple to install: Inox Park choose Solareye80 ground lighting



Innox Park, a public recreation ground, was given to Bath and North East Somerset (BANES) council by the Carr family in 1909 so that residents and visitors could enjoy this vital resource and appreciate views over the City of Bath.

Parks and open spaces provide an abundance of leisure and recreational opportunities while also benefiting people's physical and mental health.

The park is situated between two areas of housing with a footpath connecting the two. The council wanted to highlight the unbound pathway and guide people safely around at night.

THE CHALLENGE

BANES Council were looking to source economic lighting along the footpath, but in the absence of a budget to pay for the ongoing maintenance and running costs, conventional street lighting wasn't an option.

With an area that was off the national grid but needed a wayfinding lighting solution, BANES council required a cost-effective alternative to traditional lighting but without compromising on public safety.

The council approached Solareye following a recommendation about their sustainable and simple to install Solareye80 ground lighting.



THE SOLUTION

BANES Council met with Solareye at the site in Innox Park to discuss their requirements, look at prototypes and to develop a bespoke installation procedure, assuring greater accuracy and management over the project.

The Solareye80 - designed and supplied by Solareye was incorporated into a special fixture to allow installation into the unbound surface of the pathway.

It was recommended to the council as a cost-effective alternative to conventional lighting. Powered by the sun, the Solareye80 is a robust, self-contained unit. With no environmental disruption or construction costs caused by underground wiring, installation is simple and cost-effective.

Despite the unbound surface of the footpath at Innox Park, the solar units slotted seamlessly into their environment. The lights not only have a skid resistant surface, but they are certified waterproof (IP68) and vandal-proof (IK10), so once they are in place they will virtually look after themselves.



THE BENEFITS

“ Solareye80 is a great product. The team at Solareye went above and beyond to ensure that the ground light could be installed into an unbound surface, which has enabled us to highlight the pathway economically, helping the public to feel safer when using it at night. ”

- Paul Pearce, Team Leader Parks and Trees,
Bath and North East Somerset Council

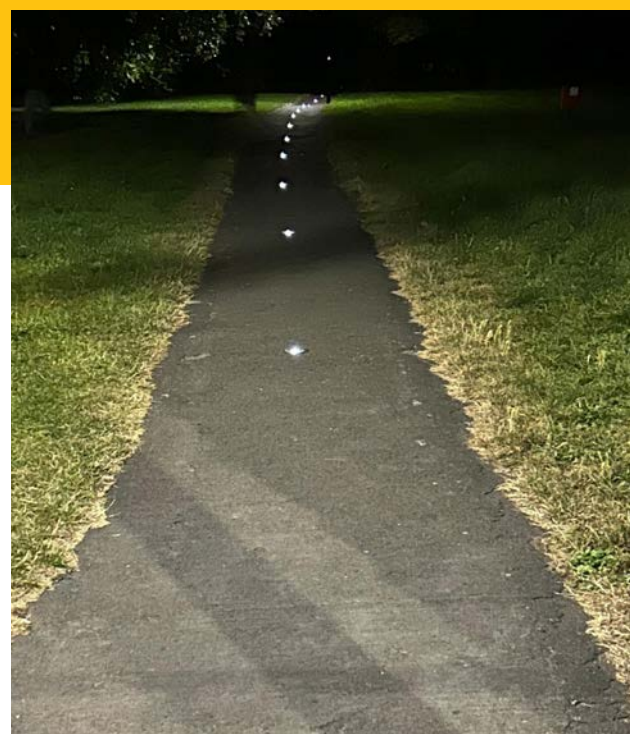
Following installation of the Solareyes, BANES Council said they were thrilled to have found a sustainable solution that is not only financially shrewd but is positive for people and positive for the planet. Comments from local residents have also been very positive, with many saying they felt the lighting was a welcome addition to the park.

WANT TO FIND OUT MORE?

Proven to work all year round, you can trust Solareye80 in any environment. Whether your installation is into conventional asphalt, concrete surfaces, or an unbound bridle way, you can be confident that we have the right solution for you.

If you have an area that requires night time delineation or way marking, contact our team to discuss how Solareye80 could work for you.

Call us on **01275 872 079**, email info@solar-eye.com or visit solar-eye.com.



About Solareye

Solareye is a family-owned company and one of the UK's leading suppliers of high quality outdoor solar lighting.

We have over 30 years in the traffic, cycle and pedestrian safety industries and a history of product design, sourcing and accreditation.

We're proud of what we do and how we do it; making roads, cycleways, pedestrian walkways, and public amenities safer for people to go about their daily business or enjoy the things they love.